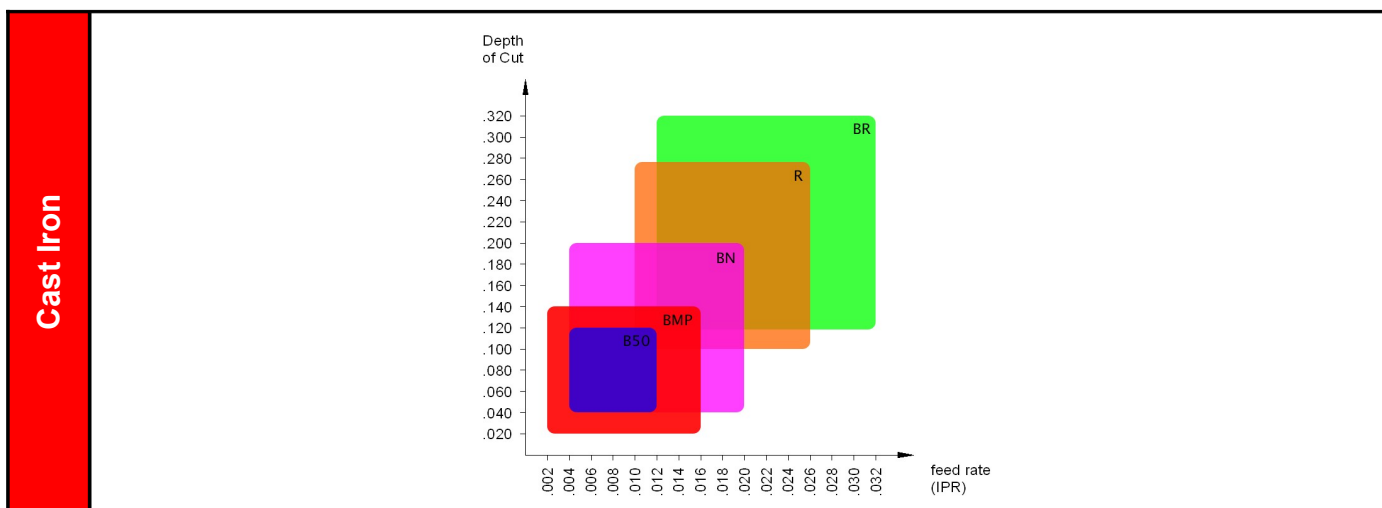
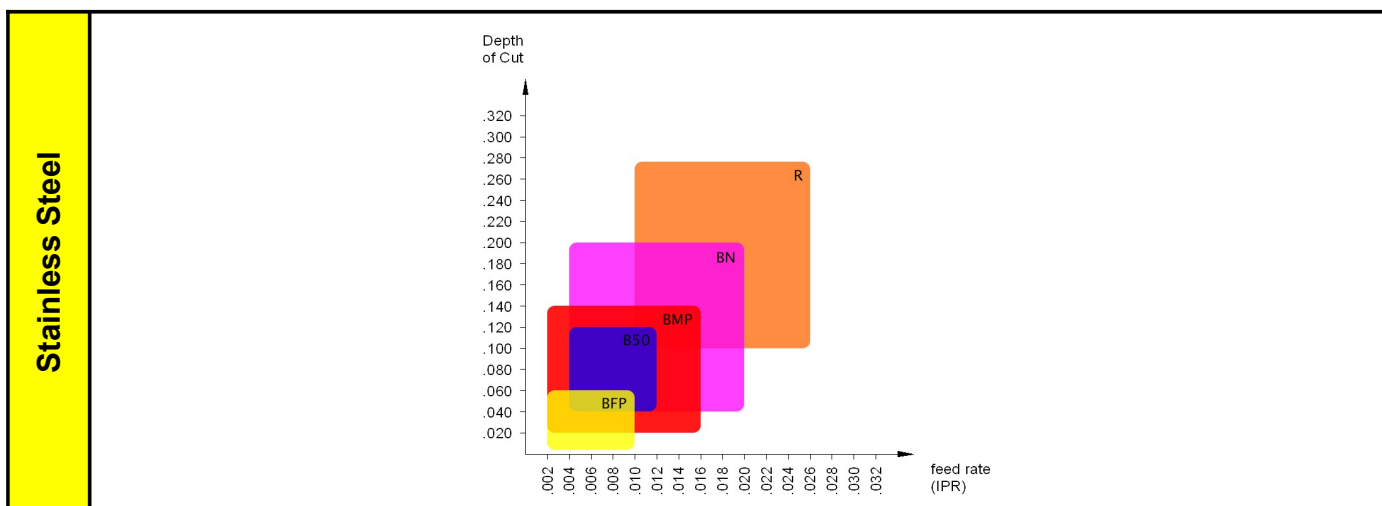
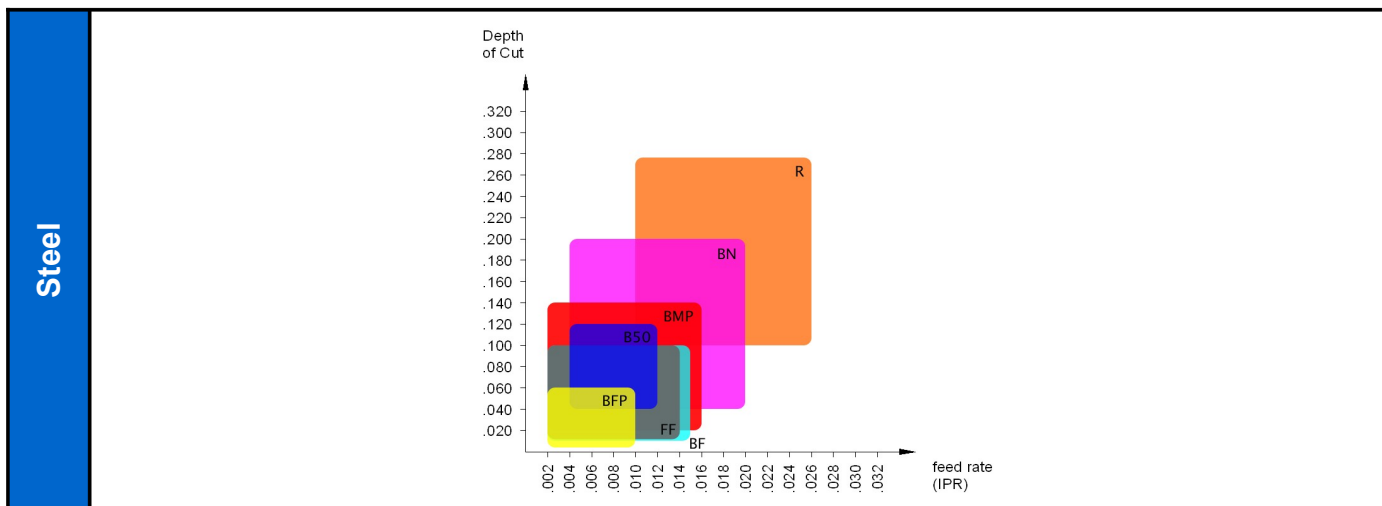


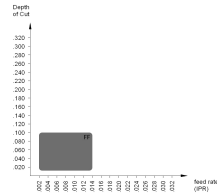
Chip Breakers for Turning



Chip Breakers for Turning

For Finish Cutting

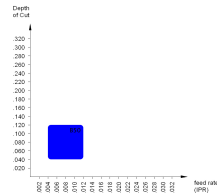
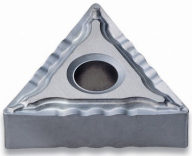
FF



- Good chip control quality on varied depth of cut.
- Excellent cutting edge strength has been acquired due to the special chip breaker.

- Recommended depth of cut (inch): .012~.100
- Recommended feed rate (IPR): .002~.014

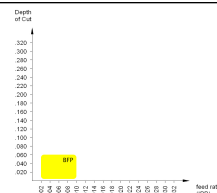
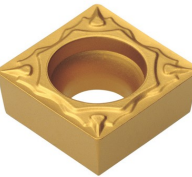
BF



- Excellent chip control in varied depth of cut cutting.
- Strong cutting edge toughness due to special design.

- Recommended depth of cut (inch): .010~.100
- Recommended feed rate (IPR): .002~.015

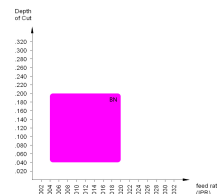
BFP



- Excellent chip control at shallow depth of cut and low feed.
- Excellent surface finish of work piece due to reduced cutting force.
- Suitable for fine boring.
- Recommended depth of cut (inch): .004~.060
- Recommended feed rate (IPR): .002~.010

For Medium Cutting

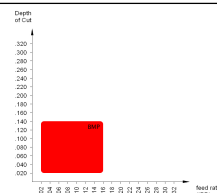
BN



- Wide available chip control range from medium-finishing to medium-roughing
- Suitable chip breaker for CNC machining.

- Recommended depth of cut (inch): .040~.200
- Recommended feed rate (IPR): .004~.020

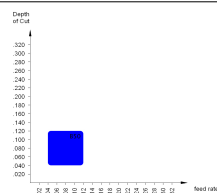
BMP



- Excellent chip control at wide range of cutting conditions.
- Suitable for stainless steel cutting.

- Recommended depth of cut (inch): .020~.140
- Recommended feed rate (IPR): .002~.016

B50

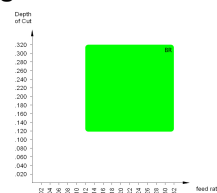
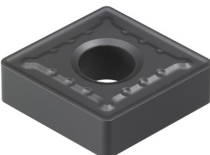


- Suitable for interrupted cutting and cast iron machining.
- Good surface finish due to low cutting force.
- Suitable for both boring and outer diameter turning.

- Recommended depth of cut (inch): .040~.120
- Recommended feed rate (IPR): .004~.012

For Medium to Rough Cutting

BR

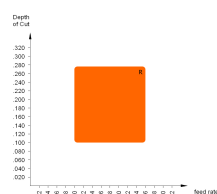


- Suitable for deep depth of cut and high feed cutting of steel and cast iron.
- Suitable for intermittent cutting.

- Recommended depth of cut (inch): .118~.320
- Recommended feed rate (IPR): .012~.032

For Rough Cutting

R



- Excellent chip control at deep depth of cut and fast feed rate.
- Strong cutting edge makes excellent cutting performance at intermittent cutting.
- Recommended depth of cut (inch): .100~.276
- Recommended feed rate (IPR): .010~.026